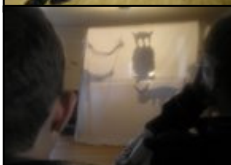




Newsletter



Lottery backs Parent/Carers Social Enterprise



Early this year, the Big Lottery Fund awarded £39,000 to the social enterprise, PASTEL, to enable the launch and roll out of its Transition Training Programme. This will create training workshops for clients – young adults with learning difficulties, aged 11-25 – to help prepare them to become active citizens once they leave school or college. Research has shown a 90% unemployment rate amongst people with a learning disability.

This inclusive programme, managed by PASTEL, is the work of local Parent/Carers and other Volunteers. By covering the cost of running this new training programme for the next three years, the Lottery grant will underpin a new service to actively support these young adults, and thus enable the programme to be sustainable in both social and economic terms.

Don Tricker, PASTEL Chief Executive, says " This is fantastic news for these young adults with additional needs, who are often not only disadvantaged by personal impairments and the attitudes of others but also by their general environment, living in a rural area.

This programme will also provide a working model to be replicated elsewhere, by other Parent/Carers, and we would encourage those Parent/Carers interested in this innovative capacity building opportunity to contact PASTEL now."



PASTEL Training Workshops

The new PASTEL training workshops started on Saturday, March 31st, and are running on alternative Saturdays, throughout 2007, up to and including Saturday, December 8th.. Each five-hour workshop runs from 10.30am until 3.30pm, with students bringing their own packed lunch.

These key educational messages and life skills training are embedded in a programme using the performing arts, and other fun activities, which take place at the new PASTEL venue - the Riverside Centre at Stratford St.Andrew, Suffolk.

The new Riverside Centre has modern facilities, including a hall with a sprung wooden floor, a fully-equipped kitchen, disabled access and toilets, spacious managed grounds with a patio and play area and plenty of free parking, immediately adjoining the main A12 road for easy access.



ISSUE 2

JUNE 2007

PASTEL (Personal Development) Ltd is a special education and training social enterprise, based in East Suffolk, supporting the personal development of people with learning difficulties and/or disabilities.

Inside this issue:

The PASTEL Programme	2
The Working Model & Toolkit	2
The Volunteers!	2
The Clients and the PASTEL Panel	3
Monitoring & Evaluation	3
Inclusive Team Training	3
What's Next?	4



The PASTEL Transition Training Programme

PASTEL aims to promote the personal and social development of learners, so as to enhance their self esteem, their aspirations and their contribution to the community.

PASTEL supports the new government approach to person-centred planning and informed choice and will particularly support the Every Child Matters aims and outcomes of:

- * Enjoy and achieve
- * Make a positive contribution

* Achieve economic well-being

PASTEL aims to achieve its soft skills training outcomes by embedding the training in fun activities (e.g. mime, drama, puppetry, dance and music) and provide a sustainable organisation and facilities where people with learning disabilities can meet, socialise and learn and improve the quality of their life.

PASTEL is being managed and developed by Parent/

Carer volunteers supported by specialist tutors and other professionals, as required.

The Admission Policy requires Clients to have a diagnosis of a learning difficulty and/or disability (mild/moderate/severe), have independent personal care skills and be able to demonstrate a minimum level of compliance necessary for his/her development, and to ensure a safe and productive learning environment.



Working Model & Toolkit

The PASTEL operation and Transition Training programme details are being progressively documented to produce The PASTEL Working Model & Toolkit. This DIY manual, with support training and service back-up, is being designed to readily enable other Parent/Carers, elsewhere, to adopt and adapt the service for their local needs and wants.

Other parent/carer

groups/organisations would be independent in all aspects, but would share the natural affinity to work together and seek further funding in collaboration.

Professionals working with Parent/Carers and their sons/daughters may like to encourage and support them to exploit this tried and tested opportunity.

The consolidation of all this information and

experience, including setting up, marketing and quality standards should be complete by Autumn 2007.

We would encourage those Parent/Carers interested in this innovative capacity building opportunity to contact PASTEL *now*, for more details via the channels listed on the back page.



The Volunteers!

The PASTEL Management Committee—all volunteers - currently comprise four Parent/Carers (mothers and fathers), one retired Social Care/Education Professional and a retired Chartered Accountant. All have years of knowledge, skills and experience in business and working with young adults.

We currently have four volunteers in their 20's and 30's—to keep up with the energy of our clients.

We are always keen to hear from new volunteers, whether it be to join the management committee or to help run our fortnightly Saturday workshops.

It can be a very rewarding

experience for all.

In particular, we are interested in other young adults (16-25) to act as volunteers and mentors. We provide induction, and further training, as appropriate.

To get in touch with us, please see the back page for contact details.



The Clients and the PASTEL Panel

Our clients range in age from 11 to 25 and attend a range of educational establishments from special schools, to mainstream High Schools and Further Education Colleges.

All live within a 20 mile radius of Saxmundham, in rural East Suffolk.

They not only represent a range of learning difficulties and/or disabilities, but also more importantly they all also

possess a range of positive qualities and gifts which need to be nurtured.

As the service is client-centred, they play a vital end-to-end role in the planning, implantation and evaluation of the programme.

PASTEL is in the process of establishing a PASTEL Panel, which will involve all the clients and present them with an even stronger voice to influence the PASTEL direction.

Thus all clients will feel a vital part of the discussions and the decision-making process.

This in turn will help to develop an awareness and understanding of democratic principles and citizenship.

It will also help the clients in their work to realise their PASTEL outcomes—increased self-esteem and confidence and gaining skills in communication, decision making and team work,



Monitoring & Evaluation

To ensure that PASTEL is on course to deliver the desired client outcomes, a key part of the process is monitoring and evaluation.—to ensure we are always on target to deliver the required outcomes, as well as generating new ideas for continually developing the programme in line with the current needs of our stakeholders, especially our

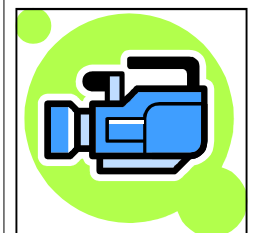
clients and their parent/carers.

PASTEL employs a battery of monitoring and evaluation tools, including group discussions, workshop feedback forms, one-to-ones, Parent/Carer questionnaires and PASTEL Stakeholder Workshops.

However, two relatively new elements have been added—the PASTEL PANEL

and research into the active deployment of video diaries.

The PASTEL website has this year been completed revamped and enhanced, partly to accommodate the planned new video approach. The new multimedia capability will allow a selection of video clips to be uploaded directly to the PASTEL website...



Inclusive Team Training

In August, The PASTEL team — clients, volunteers and members of the management committee will be carrying out a day's training in first aid - together.

This course is being delivered in partnership with The British Red Cross and will be designed to

produce an innovative programme with a more flexible approach to suit all the team's wants and needs.

Very importantly, this course recognises that everyone's a potential life-saver.

However, as with the PASTEL Transition Training Programme, this first aid-

course is not just about learning first aid skills, it will also help our clients to increase their confidence and their ability to act independently.

Further news on the successful outcomes will be carried, on our new website, so please make sure to keep visiting it...





Pastel (Personal Development) Ltd
Company No. 5471206

Registered Head Office:

2 Fitzgerald Mews
Saxmundham
Suffolk
IP17 1XP

Phone: 01728-604944

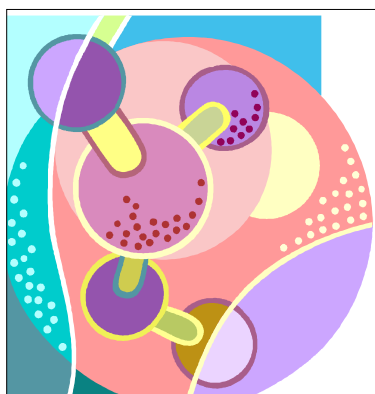
E-mail: don.tricker@pastel.org.uk

PASTEL =

Personal Achievement through
Special Training, Education and
Learning

VISION

Citizens with learning difficulties
are active in local life, for life.



For updated information and
news, please check
our new multimedia website

www.pastel.org.uk

PASTEL's Four Objectives

- 1.To provide or assist in providing facilities, activities, and educational training for the social and economic benefit of persons with learning and other disabilities.
- 2 .To provide training, employment and volunteering opportunities to people working or seeking to work with young adults with learning and other difficulties, primarily but not exclusively in Suffolk and surrounding areas.
- 3 .To promote for the public benefit employment practice by the advancement of education, training or retraining, particularly among unemployed young adults with learning and other difficulties, and by providing unemployed people with work experience.
4. To advance the education of the public with particular reference to social enterprises for people with disabilities and the benefits they provide to society. and for their workers.

What's Coming Next?

Quality Standards Accreditation

PASTEL is currently working with Young Suffolk — the independent voice of the children and young people's sector in Suffolk -to gain a first level accreditation, this year, for its policies and procedures.

Shortly, this approach will be broadened to encompass the widely acclaimed PQASSO system, employed by a growing number of third sector enterprises.

The PQASSO team in turn are looking to establish a nationally recognised accreditation system



Saxmundham Arts Festival

The PASTEL clients are currently working, with professional tutors and workshop volunteers, to plan, design and deliver their own shadow puppet show at the Saxmundham Arts Festival, during school-half term in October.

For those who won't be able to be at the show, we plan to video the preparation and performance and upload it directly on to our new website for the whole world to see!

Client Work Accreditation

We are also currently investigating various national third-party accreditation schemes, on behalf of our clients, with the aim of introducing a scheme for 2008.

However, in the short-term, we also want to launch an internal PASTEL reward & recognition system for our clients which will be started this summer.

We will be awarding our own client achievement certificates (with accompanying award ceremonies) as well as attendance rewards. These plans will be "fleshed out" by the PASTEL Panel...